

# BOOKS ON SOUTHEAST ASIAN ART



**Trinh Tuan**  
Lacquer Paintings

**Dinh Quan**  
Lacquer Paintings

**U Lun Gywe**  
A Master Painter from Myanmar

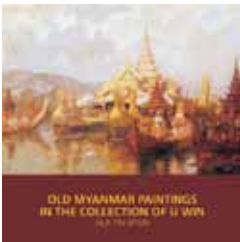
**Old Myanmar Paintings**  
in The Collection of U Win



**Cong Kim Hoa**  
Lacquer Paintings

**Flavours**  
Thai Contemporary Art

**Impression and Expressions**  
Vietnamese Contemporary Painting

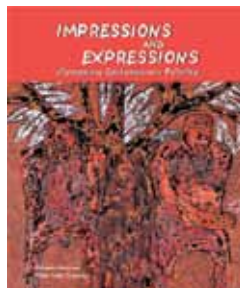
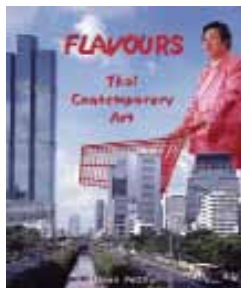


**Art Works by Bui Xuan Phai**  
From the Collection of Van Duong Thanh

**Pham An Hai**  
Expressions & Abstractions

**Aung Kyaw Htet**  
Myanmar Inspirations

**Feasting the Female Form - U Lun Gywe**





**NGUYEN THI CHAU**  
**GIANG**  
 Vietnam  
 b. 1975  
 In The Cage, 2009  
 Pigments on silk  
 77 x 116 cm

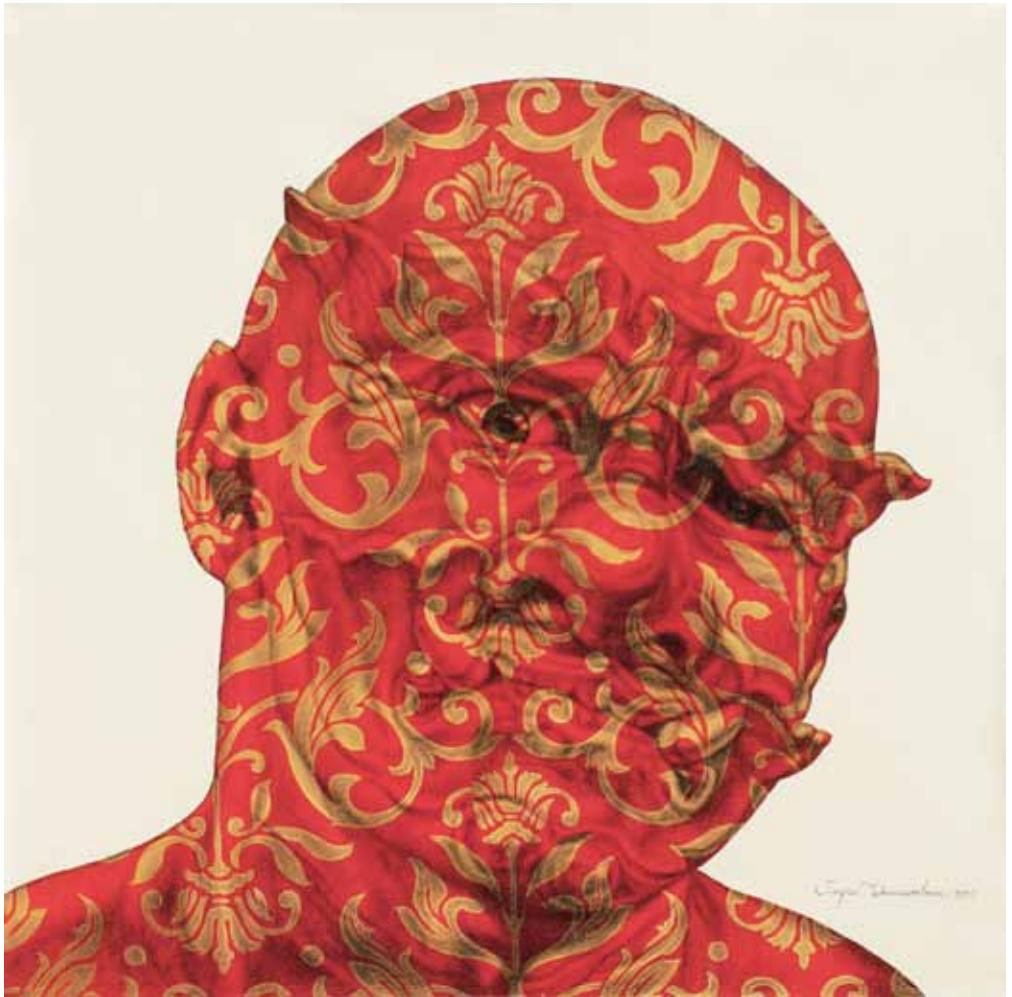


## January

2013

| Sun | Mon | Tue | Wed | Thu | Fri | Sat |
|-----|-----|-----|-----|-----|-----|-----|
|     |     | 01  | 02  | 03  | 04  | 05  |
| 06  | 07  | 08  | 09  | 10  | 11  | 12  |
| 13  | 14  | 15  | 16  | 17  | 18  | 19  |
| 20  | 21  | 22  | 23  | 24  | 25  | 26  |
| 27  | 28  | 29  | 30  | 31  |     |     |

1 New Year's Day



**JIRAPAT  
TATSANASOMBOON  
Thailand**

b. 1971  
To Be What You Are Not,  
2012

Acrylic on canvas  
129 x 129 cm



## February

2013

| Sun | Mon | Tue | Wed | Thu | Fri | Sat |
|-----|-----|-----|-----|-----|-----|-----|
|     |     |     |     |     | 01  | 02  |
| 03  | 04  | 05  | 06  | 07  | 08  | 09  |
| 10  | 11  | 12  | 13  | 14  | 15  | 16  |
| 17  | 18  | 19  | 20  | 21  | 22  | 23  |
| 24  | 25  | 26  | 27  | 28  |     |     |

25 Makha Bucha Day



**NYEIN CHAN SU**  
**Myanmar**

b. 1973  
 Smile In The Pagoda, 2012  
 Giclée print on archival  
 paper, unique  
 90 x 60 cm



March

2013

| Sun   | Mon | Tue | Wed | Thu | Fri | Sat |
|-------|-----|-----|-----|-----|-----|-----|
|       |     |     |     |     | 01  | 02  |
| 03    | 04  | 05  | 06  | 07  | 08  | 09  |
| 10    | 11  | 12  | 13  | 14  | 15  | 16  |
| 17    | 18  | 19  | 20  | 21  | 22  | 23  |
| 24/31 | 25  | 26  | 27  | 28  | 29  | 30  |



**ANGKANA KONGPETCH**  
**Thailand**

b. 1982  
 Genesis, 2012  
 Acrylic on canvas  
 90 x 120 cm



April

2013

| Sun | Mon | Tue | Wed | Thu | Fri | Sat |
|-----|-----|-----|-----|-----|-----|-----|
|     | 01  | 02  | 03  | 04  | 05  | 06  |
| 07  | 08  | 09  | 10  | 11  | 12  | 13  |
| 14  | 15  | 16  | 17  | 18  | 19  | 20  |
| 21  | 22  | 23  | 24  | 25  | 26  | 27  |
| 28  | 29  | 30  |     |     |     |     |

6 Chakri Memorial Day | 13, 14, 15, 16 Songkran Festival Day



**NGUYEN QUANG HUY**  
**Vietnam**

b. 1971  
Hmong Girl, 2010  
Oil on canvas  
100 x 100 cm



May

2013

| Sun | Mon | Tue | Wed | Thu | Fri | Sat |
|-----|-----|-----|-----|-----|-----|-----|
|     |     |     | 01  | 02  | 03  | 04  |
| 05  | 06  | 07  | 08  | 09  | 10  | 11  |
| 12  | 13  | 14  | 15  | 16  | 17  | 18  |
| 19  | 20  | 21  | 22  | 23  | 24  | 25  |
| 26  | 27  | 28  | 29  | 30  | 31  |     |

1 National Labour Day | 5 Coronation Day | 24 Visakha Bucha Day



**MAITREE SIRIBOON**  
**Thailand**

b. 1983  
 Buffalo Panda, 2012  
 Giclée print on archival paper,  
 edition 5  
 120 x 90 cm

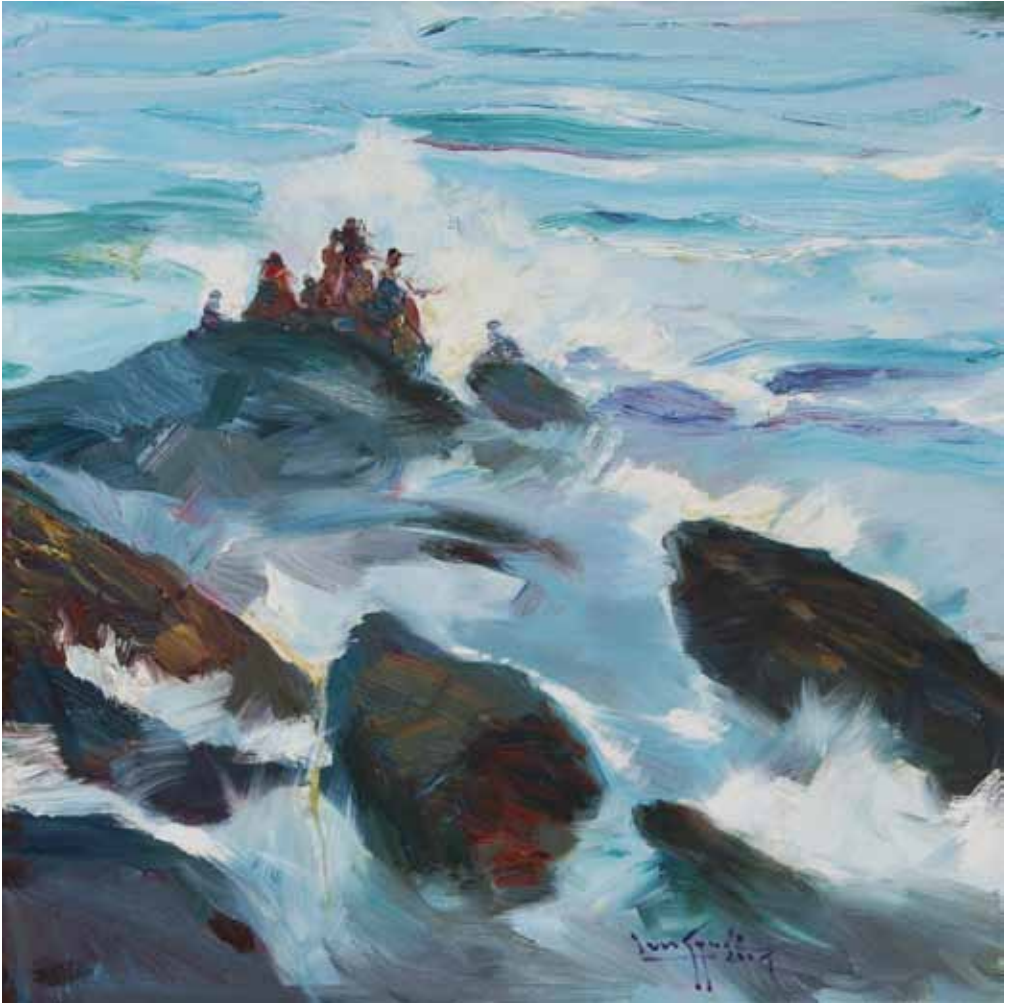


June

2013

| Sun   | Mon | Tue | Wed | Thu | Fri | Sat |
|-------|-----|-----|-----|-----|-----|-----|
|       |     |     |     |     |     | 01  |
| 02    | 03  | 04  | 05  | 06  | 07  | 08  |
| 09    | 10  | 11  | 12  | 13  | 14  | 15  |
| 16    | 17  | 18  | 19  | 20  | 21  | 22  |
| 23/30 | 24  | 25  | 26  | 27  | 28  | 29  |





**U LUN GYWE**  
**Myanmar**

b. 1930  
A Family At The  
Shore, 2004  
Oil on canvas  
68 x 68 cm



## July

2013

| Sun | Mon | Tue | Wed | Thu | Fri | Sat |
|-----|-----|-----|-----|-----|-----|-----|
|     | 01  | 02  | 03  | 04  | 05  | 06  |
| 07  | 08  | 09  | 10  | 11  | 12  | 13  |
| 14  | 15  | 16  | 17  | 18  | 19  | 20  |
| 21  | 22  | 23  | 24  | 25  | 26  | 27  |
| 28  | 29  | 30  | 31  |     |     |     |

22 Asarnha Bucha Day



**DINH QUAN**  
Vietnam

b. 1964

Tears of Hope, 2010  
Lacquer and dyes on board  
100 x 120 cm

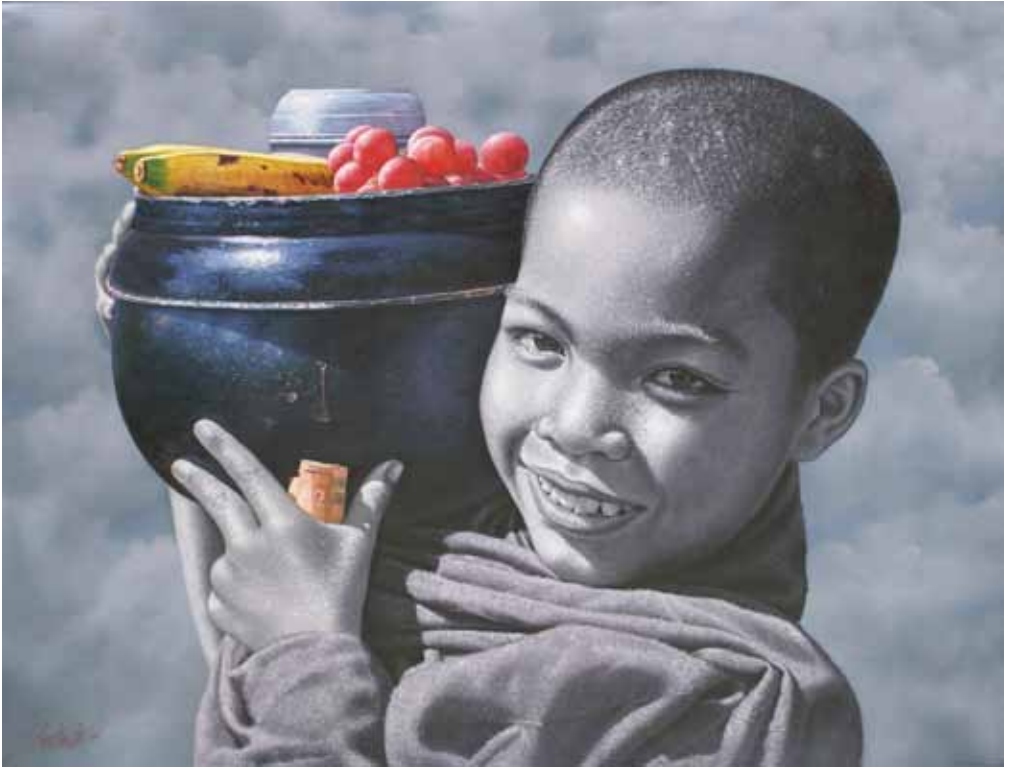


August

2013

| Sun | Mon | Tue | Wed | Thu | Fri | Sat |
|-----|-----|-----|-----|-----|-----|-----|
|     |     |     |     | 01  | 02  | 03  |
| 04  | 05  | 06  | 07  | 08  | 09  | 10  |
| 11  | 12  | 13  | 14  | 15  | 16  | 17  |
| 18  | 19  | 20  | 21  | 22  | 23  | 24  |
| 25  | 26  | 27  | 28  | 29  | 30  | 31  |

12 Her Majesty The Queen's Birthday



**AUNG KYAW HTET**  
**Myanmar**

b. 1965  
 Sunshine On My Face, 2011  
 Oil on canvas  
 152 x 117 cm



## September

2013

| Sun | Mon | Tue | Wed | Thu | Fri | Sat |
|-----|-----|-----|-----|-----|-----|-----|
| 01  | 02  | 03  | 04  | 05  | 06  | 07  |
| 08  | 09  | 10  | 11  | 12  | 13  | 14  |
| 15  | 16  | 17  | 18  | 19  | 20  | 21  |
| 22  | 23  | 24  | 25  | 26  | 27  | 28  |
| 29  | 30  |     |     |     |     |     |



**THAWEESAK  
SRITHONGDEE**  
Thailand  
b. 1970  
Aquarium, 2011  
Acrylic on canvas  
130 x 150 cm



October

2013

| Sun | Mon | Tue | Wed | Thu | Fri | Sat |
|-----|-----|-----|-----|-----|-----|-----|
|     |     | 01  | 02  | 03  | 04  | 05  |
| 06  | 07  | 08  | 09  | 10  | 11  | 12  |
| 13  | 14  | 15  | 16  | 17  | 18  | 19  |
| 20  | 21  | 22  | 23  | 24  | 25  | 26  |
| 27  | 28  | 29  | 30  | 31  |     |     |

23 Chulalongkorn Memorial Day



**PHYOE KYI**  
**Myanmar**

b. 1977

Beyond Burma or Inside  
 Fire (5), 2012

Giclée print on archival paper  
 25.4 x 35.6 cm



## November

2013

| Sun | Mon | Tue | Wed | Thu | Fri | Sat |
|-----|-----|-----|-----|-----|-----|-----|
|     |     |     |     |     | 01  | 02  |
| 03  | 04  | 05  | 06  | 07  | 08  | 09  |
| 10  | 11  | 12  | 13  | 14  | 15  | 16  |
| 17  | 18  | 19  | 20  | 21  | 22  | 23  |
| 24  | 25  | 26  | 27  | 28  | 29  | 30  |



**PHAM AN HAI,**  
**Vietnam**  
 b. 1967  
 Lotus #4 , 2012  
 Oil on canvas  
 50 x 50 cm



## December

2013

| Sun | Mon | Tue | Wed | Thu | Fri | Sat |
|-----|-----|-----|-----|-----|-----|-----|
| 01  | 02  | 03  | 04  | 05  | 06  | 07  |
| 08  | 09  | 10  | 11  | 12  | 13  | 14  |
| 15  | 16  | 17  | 18  | 19  | 20  | 21  |
| 22  | 23  | 24  | 25  | 26  | 27  | 28  |
| 29  | 30  | 31  |     |     |     |     |

5 His Majesty The King's Birthday | 10 Constitution Day | 31 New Year's Eve

# Calendar 2014

## January 2014

| S  | M  | T  | W  | T  | F  | S  |
|----|----|----|----|----|----|----|
|    |    |    | 1  | 2  | 3  | 4  |
| 5  | 6  | 7  | 8  | 9  | 10 | 11 |
| 12 | 13 | 14 | 15 | 16 | 17 | 18 |
| 19 | 20 | 21 | 22 | 23 | 24 | 25 |
| 26 | 27 | 28 | 29 | 30 | 31 |    |

## February 2014

| S  | M  | T  | W  | T  | F  | S  |
|----|----|----|----|----|----|----|
|    |    |    |    |    |    | 1  |
| 2  | 3  | 4  | 5  | 6  | 7  | 8  |
| 9  | 10 | 11 | 12 | 13 | 14 | 15 |
| 16 | 17 | 18 | 19 | 20 | 21 | 22 |
| 23 | 24 | 25 | 26 | 27 | 28 |    |

## March 2014

| S  | M  | T  | W  | T  | F  | S  |
|----|----|----|----|----|----|----|
|    |    |    |    |    |    | 1  |
| 2  | 3  | 4  | 5  | 6  | 7  | 8  |
| 9  | 10 | 11 | 12 | 13 | 14 | 15 |
| 16 | 17 | 18 | 19 | 20 | 21 | 22 |
| 23 | 24 | 25 | 26 | 27 | 28 | 29 |
| 30 | 31 |    |    |    |    |    |

## April 2014

| S  | M  | T  | W  | T  | F  | S  |
|----|----|----|----|----|----|----|
|    |    | 1  | 2  | 3  | 4  | 5  |
| 6  | 7  | 8  | 9  | 10 | 11 | 12 |
| 13 | 14 | 15 | 16 | 17 | 18 | 19 |
| 20 | 21 | 22 | 23 | 24 | 25 | 26 |
| 27 | 28 | 29 | 30 |    |    |    |

## May 2014

| S  | M  | T  | W  | T  | F  | S  |
|----|----|----|----|----|----|----|
|    |    |    |    | 1  | 2  | 3  |
| 4  | 5  | 6  | 7  | 8  | 9  | 10 |
| 11 | 12 | 13 | 14 | 15 | 16 | 17 |
| 18 | 19 | 20 | 21 | 22 | 23 | 24 |
| 25 | 26 | 27 | 28 | 29 | 30 | 31 |

## June 2014

| S  | M  | T  | W  | T  | F  | S  |
|----|----|----|----|----|----|----|
| 1  | 2  | 3  | 4  | 5  | 6  | 7  |
| 8  | 9  | 10 | 11 | 12 | 13 | 14 |
| 15 | 16 | 17 | 18 | 19 | 20 | 21 |
| 22 | 23 | 24 | 25 | 26 | 27 | 28 |
| 29 | 30 |    |    |    |    |    |

## July 2014

| S  | M  | T  | W  | T  | F  | S  |
|----|----|----|----|----|----|----|
|    |    | 1  | 2  | 3  | 4  | 5  |
| 6  | 7  | 8  | 9  | 10 | 11 | 12 |
| 13 | 14 | 15 | 16 | 17 | 18 | 19 |
| 20 | 21 | 22 | 23 | 24 | 25 | 26 |
| 27 | 28 | 29 | 30 | 31 |    |    |

## August 2014

| S  | M  | T  | W  | T  | F  | S  |
|----|----|----|----|----|----|----|
|    |    |    |    |    | 1  | 2  |
| 3  | 4  | 5  | 6  | 7  | 8  | 9  |
| 10 | 11 | 12 | 13 | 14 | 15 | 16 |
| 17 | 18 | 19 | 20 | 21 | 22 | 23 |
| 24 | 25 | 26 | 27 | 28 | 29 | 30 |
| 31 |    |    |    |    |    |    |

## September 2014

| S  | M  | T  | W  | T  | F  | S  |
|----|----|----|----|----|----|----|
|    | 1  | 2  | 3  | 4  | 5  | 6  |
| 7  | 8  | 9  | 10 | 11 | 12 | 13 |
| 14 | 15 | 16 | 17 | 18 | 19 | 20 |
| 21 | 22 | 23 | 24 | 25 | 26 | 27 |
| 28 | 29 | 30 |    |    |    |    |

## October 2014

| S  | M  | T  | W  | T  | F  | S  |
|----|----|----|----|----|----|----|
|    |    | 1  | 2  | 3  | 4  |    |
| 5  | 6  | 7  | 8  | 9  | 10 | 11 |
| 12 | 13 | 14 | 15 | 16 | 17 | 18 |
| 19 | 20 | 21 | 22 | 23 | 24 | 25 |
| 26 | 27 | 28 | 29 | 30 | 31 |    |

## November 2014

| S  | M  | T  | W  | T  | F  | S  |
|----|----|----|----|----|----|----|
|    |    |    |    |    |    | 1  |
| 2  | 3  | 4  | 5  | 6  | 7  | 8  |
| 9  | 10 | 11 | 12 | 13 | 14 | 15 |
| 16 | 17 | 18 | 19 | 20 | 21 | 22 |
| 23 | 24 | 25 | 26 | 27 | 28 | 29 |
| 30 |    |    |    |    |    |    |

## December 2014

| S  | M  | T  | W  | T  | F  | S  |
|----|----|----|----|----|----|----|
|    | 1  | 2  | 3  | 4  | 5  | 6  |
| 7  | 8  | 9  | 10 | 11 | 12 | 13 |
| 14 | 15 | 16 | 17 | 18 | 19 | 20 |
| 21 | 22 | 23 | 24 | 25 | 26 | 27 |
| 28 | 29 | 30 | 31 |    |    |    |

EXPLORE  
THE BEST OF  
CONTEMPORARY  
ART FROM  
THAILAND,  
VIETNAM AND  
MYANMAR

[www.thavibu.com](http://www.thavibu.com)







**[www.thavibu.com](http://www.thavibu.com)**

The Silom Galleria,  
4th Floor, Suite 433, 919/1 Silom road,  
Bangkok 10500, Thailand  
Tel (662) 266 5454, Fax. (662) 266 5455

E-mail : [info@thavibu.com](mailto:info@thavibu.com)  
[Facebook.com/thavibu.gallery](https://www.facebook.com/thavibu.gallery)

Twitter: [@thavibu](https://twitter.com/thavibu)  
Free iPhone and iPad App